



FLOWTECH

DIRECT FIT

"Providing the unfair advantage"

FLOWTECH

DIRECT FIT

AIM OF DIRECT FIT

To provide a range of Direct Fit replacement exhaust components for specific vehicle models.

LOADER & EXCAVATOR	130
MUSTANG	130
CASE	130
BOBCAT	130
TRUCK, BUS & COACH	132
FORD TRUCK	133
FREIGHTLINER TRUCK	134
HINO BUS	135
HINO TRUCK	135
ISUZU TRUCK	138
KENWORTH TRUCK	142
MERCEDES BUS	144
MERCEDES TRUCK	147
MITSUBISHI BUS	148
MITSUBISHI TRUCK	148
SCANIA BUS	151
SCANIA TRUCK	151
UD TRUCK	152
VOLVO BUS	153
VOLVO TRUCK	154
EURO IV & V SILENCERS	156
WESTERN STAR TRUCK	158



FEATURES & ADVANTAGES

- Direct Fit replacement
- Heavy duty, fully welded construction
- Heat painted for increased durability



LOADER & EXCAVATOR DIRECT FIT



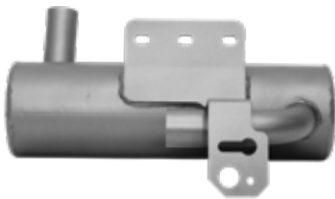
MUSTANG 940

STOCK CODE	INLET (ID)	OUTLET (OD)	BODY OD	BODY LENGTH
17940T	1¾" (44mm) OD	1¾" (44mm)	8" (203mm) x 5" (127mm)	12" (305mm)



CASE 1840

STOCK CODE	INLET (ID)	OUTLET (OD)	BODY OD	BODY LENGTH
17840T	2-1/2" 4-Bolt Flange	2-1/2" (63mm)	6" (152mm)	21" (533mm)



BOBCAT EXCAVATOR 430

STOCK CODE	INLET (ID)	OUTLET (OD)	BODY OD	BODY LENGTH
17430T	1¾" (44mm)	1¾" (44mm)	5" (127mm)	16½" (419mm)



BOBCAT S630, S650, T630, T650

STOCK CODE	INLET (ID)	OUTLET (OD)	BODY OD	BODY LENGTH
17560T	2" 4-Bolt Flange	2" (51mm)	6" (152mm)	27" (686mm)



BOBCAT 642, 643, 645, 742, 743

STOCK CODE	INLET (ID)	OUTLET (OD)	BODY OD	BODY LENGTH
17410T	1¾" (44mm)	1¾" (44mm)	4" (102mm)	30" (762mm)

BOBCAT

751, 753, 763, S130, S150



STOCK CODE	INLET (ID)	OUTLET (OD)	BODY OD	BODY LENGTH
17753T	1¾" (44mm)	1¾" (44mm)	5" (127mm)	28¾" (718mm)

773



STOCK CODE	INLET (ID)	OUTLET (OD)	BODY OD	BODY LENGTH
17773T	1¾" (44mm)	1¾" (44mm)	5" (127mm)	24" (600mm)

S185



STOCK CODE	INLET (ID)	OUTLET (OD)	BODY OD	BODY LENGTH
17185T	2" (51mm)	2" (51mm)	5" (127mm)	24" (600mm)

843, 853



STOCK CODE	INLET (ID)	OUTLET (OD)	BODY OD	BODY LENGTH
17853T	1¾" (44mm)	1¾" (44mm)	5" (127mm)	28¾" (730mm)

853H



STOCK CODE	INLET (ID)	OUTLET (OD)	BODY OD	BODY LENGTH
18853H	1¾" (44mm)	1¾" (44mm)	6" (152mm)	27" (686mm)

863



STOCK CODE	INLET (ID)	OUTLET (OD)	BODY OD	BODY LENGTH
M17863-2T	2½" 2-Bolt Flange (FP263)	2½" (63mm)	8" (203mm) x 4" (102mm)	29" (736mm)
M17863-3T	2½" 3-Bolt Flange (FP363-PERK)	2½" (63mm)	8" (203mm) x 4" (102mm)	29" (736mm)



TRUCK, BUS & COACH DIRECT FIT

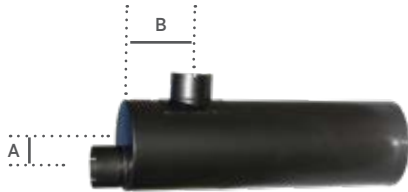


A range of after market replacement exhaust components for specific bus and coach models.

FORD TRUCK	133	MITSUBISHI BUS & TRUCK	148
FREIGHTLINER TRUCK	134	SCANIA BUS & TRUCK	151
HINO BUS & TRUCK	135	UD TRUCK	152
ISUZU TRUCK	138	VOLVO BUS & TRUCK	153
KENWORTH TRUCK	142	WESTERN STAR TRUCK	156
MERCEDES BUS & TRUCK	144	EURO IV & V SILENCERS	157



FORD



The inlet offset (A) is the distance from the end of the barrel to the centre of the inlet pipe.
The outlet offset (B) is the distance from the centre of the barrel to the centre of the outlet pipe.



LOUISVILLE LTS9000

5" ID END INLET (6:00) / 5" ID SIDE OUTLET (12:00)

STOCK CODE	BARREL DIAMETER	BARREL LENGTH	INLET OFFSET (A)	OUTLET OFFSET (B)
MSO1148-500FL	11" (280mm)	48" (1220mm)	2-1/2" (63mm)	8 1/2" (220mm)



STERLING - DUAL SYSTEM

5" ID END INLET (CENTRE) / 5" ID SIDE OUTLET (12:00)

STOCK CODE	BARREL DIAMETER	BARREL LENGTH	OUTLET OFFSET (B)
MSO1141-500	11" (280mm)	41" (1040mm)	4" (102mm)



STERLING 13" BARREL

5" ID END INLET (CENTRE) / 5" ID SIDE OUTLET (12:00)

STOCK CODE	BARREL DIAMETER	BARREL LENGTH	OUTLET OFFSET (B)
MSO1340-500	13" (330mm)	40" (1016mm)	11 1/2" (292mm)



STERLING 11" BARREL

4" ID END INLET (CENTRE) / 4" MACHINED SIDE OUTLET (12:00)

STOCK CODE	BARREL DIAMETER	BARREL LENGTH	OUTLET OFFSET (B)
MSO1142-400ST	11" (280mm)	42" (1066mm)	8" (203mm)



STERLING CAT C12 TURBO

4" ID END INLET (CENTRE) / 5" MACHINED SIDE OUTLET (12:00)

STOCK CODE	BARREL DIAMETER	BARREL LENGTH	OUTLET OFFSET (B)
MSO1142-405ST	11" (280mm)	42" (1066mm)	8" (203mm)



STERLING HN80

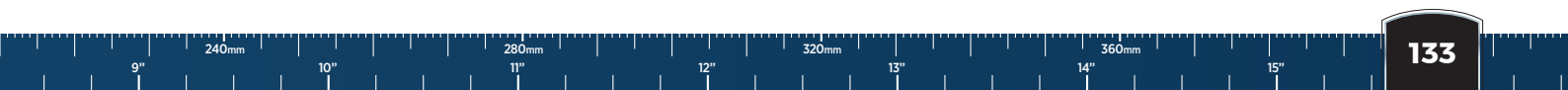
5" ID END INLET (CENTRE) / 5" MACHINED SIDE OUTLET (12:00)

STOCK CODE	BARREL DIAMETER	BARREL LENGTH	OUTLET OFFSET (B)
MSO1253-500ST	12" (305mm)	53" (1345mm)	5 1/2" (140mm)

FLOWTECH

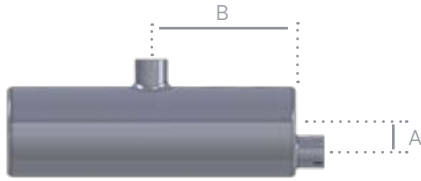
DIRECT FIT

FORD - DIRECT FIT





FREIGHTLINER



FL80

4" ID END INLET (6:00) / 4" ID SIDE OUTLET (12:00)

STOCK CODE	BARREL DIAMETER	BARREL LENGTH	INLET OFFSET (A)	OUTLET OFFSET (B)
MSOC1136-400FR	11" (280mm)	36" (915mm)	2 1/2" (63mm)	Centre

FLOWTECH

DIRECT FIT

FREIGHTLINER - DIRECT FIT

HINO - BUS



Hino KL series

Gen: 17501-110

STOCK CODE	BARREL DIAMETER	BARREL LENGTH	INLET (ID)	OUTLET (ID)
MB722-23856	7" (178mm)	22" (560mm)	2½" (60mm)	2¼" (56mm)

Hino Bus RG197

Gen: 17501-3620

STOCK CODE	BARREL DIAMETER	BARREL LENGTH	INLET (ID)	OUTLET (ID)
MB822-300H	8" (203mm)	22" (560mm)	3" (76mm)	3¼" (80mm)

HINO - TRUCK MUFFLER REFERENCE BY MODEL

MODEL	STOCK CODE	MODEL	STOCK CODE
AM100 Bus	MB722-23856	FG17L ('86-'91)	MSE8522-275
BC114 Bus	MSE8522-275	FG19L ('86-'91)	MSE1128-318H
BD186 Bus	MSE11831-2753F	FG1J Ranger 9 ('96-'02)	MSE1128-318H
FB4J Ranger 4 ('98-'03)	MSE11831-2753F	FM1J	MB1025-394PF (Purifier)
FC14 Fleeter ('83-'92)	MSE8522-275	FM1J Ranger 14 ('96-'02)	MSE1128-318H
FC3J Ranger 5 ('96-'02)	MSE11831-2753F	FT16L ('85-'91)	MSE8522-275
FC3W Merlin ('92-'96)	MSE8526-275	FT1J Ranger 5Z ('96-'02)	MSB11831-2753H
FD16L ('86-'91)	MSE8522-275	GD16L ('86-'91)	MSE8522-275
FD17K ('81-'86)	MSE8522-275	GD17K ('81-'86)	MSE8522-275
FD1J	MB1025-394PF (Purifier)	GD1J	MB1025-394PF (Purifier)
FD1J	MB1025-394F (No Purifier)	GD1J Ranger 7 ('96-'02)	MSE11831-2753F
FD1J Ranger 6 ('96-'02)	MSE11831-2753F	GD3H Harrier ('91-'96)	MSE11831-2753F
FD1J Ranger Super 6 ('96-'02)	MSE1128-318H	GH1H Super Eagle ('91-'96)	MSE1128-318H
FD2J Ranger 6 9'96-'02)	MSE11831-2753F	GH1J Ranger 10 ('96-'02)	MSE1128-318H
FD3H Hawker ('91-'96)	MSE11831-2753F	GH3H Eagle ('91-'96)	MSE11831-2753F
FD3W Hawker ('91-'96)	MSE11831-2753F	GT17K ('81-'86)	MSE8522-275
FE3H Raven ('91-'96)	MSE8526-275	GT1J Ranger 8Z ('96-'02)	MSB11831-2753H
FE3H Raven ('91-'96)	MSE11831-2753F	GT3H Osprey ('91-'96)	MSB11831-2753H
FF17K ('81-'85)	MSE8522-275	KL3 (1971-1980)	MB722-23856
FF17L ('86-'89)	MSE8522-275	KR3 (1971-1981)	MB722-23856
FF19K (1981-1985)	MB822-300H	LB5" (1971-1981)	MB722-23856
FF19L (1986-1991)	MB822-300H	RG197 Bus	MB822-300H
FF1J Ranger 8 ('96-'02)	MSE11831-2753F	RK176 Bus	MB722-23856
FF2H Griffon ('91-'96)	MSE1128-318H		



MB722-23856

Gen: 17501-110

AM100 Bus, KL3 (1971-1980), KR3 (1971-1981), LB5" (1971-1981), RK176 Bus

STOCK CODE	BARREL DIAMETER	BARREL LENGTH	INLET (ID)	OUTLET (ID)
MB722-23856	7" (178mm)	22" (560mm)	2 $\frac{3}{8}$ " (60mm)	2 $\frac{1}{4}$ " (56mm)



MB822-300H

Gen: 17501-3620

FF19K (1981-1985), FF19L (1986-1991), RG197 Bus

STOCK CODE	BARREL DIAMETER	BARREL LENGTH	INLET (ID)	OUTLET (ID)
MB822-300H	8" (203mm)	22" (560mm)	3" (76mm)	3 $\frac{1}{8}$ " (80mm)



Has purifier built into muffler
Made to order

MB1025-394PF

Gen: 17607-1400

FD1J, FM1J, GD1J

STOCK CODE	BARREL DIAMETER	BARREL LENGTH	INLET (ID)	OUTLET (ID)
MB1025-394PF	10" (254mm)	25" (635mm)	4 Bolt Flanged	94mm



Made to order

MB1025-394F

FD1J

STOCK CODE	BARREL DIAMETER	BARREL LENGTH	INLET (ID)	OUTLET (ID)
MB1025-394F	10" (254mm)	25" (635mm)	4 Bolt Flanged	94mm



MSB11831-2753H

GEN: 17501-5360

FT1J Ranger 5Z ('96-'02), GT1J Ranger 8Z ('96-'02), GT3H Osprey ('91-'96)

STOCK CODE	BARREL DIAMETER	BARREL LENGTH	INLET (ID)	OUTLET (ID)
MSB11831-2753H	11" (280mm) x 8" (203mm)	31" (787mm)	3 Bolt Flanged	3" (76mm)



MSE8522-275

BC114 Bus, FC14 Fleeter ('83-'92), FD16L ('86-'91), FD17K ('81-'86), FF17K ('81-'85), FF17L ('86-'89), FG17L ('86-'91), FT16L ('85-'91), GD16L ('86-'91), GD17K ('81-'86), GT17K ('81-'86)

STOCK CODE	BARREL DIAMETER	BARREL LENGTH	INLET (ID)	OUTLET (ID)
MSE8522-275	8½" (216mm)	22" (560mm)	2¾" (70mm)	2¾" (70mm)



MSE8526-275

Gen: 17501-4831
FC3W Merlin ('92-'96), FE3H Raven ('91-'96)

STOCK CODE	BARREL DIAMETER	BARREL LENGTH	INLET (ID)	OUTLET (ID)
MSE8526-275	8½" (216mm)	26" (660mm)	2¾" (70mm)	2¾" (70mm)



MSE1128-318H

Gen: 17501-4361
FD1J Ranger Super 6 ('96-'02), FF2H Griffon ('91-'96), FG19L ('86-'91), FG1J Ranger 9 ('96-'02), FM1J Ranger 14 ('96-'02), GH1H Super Eagle ('91-'96), GH1J Ranger 10 ('96-'02),

STOCK CODE	BARREL DIAMETER	BARREL LENGTH	INLET (ID)	OUTLET (ID)
MSE1128-318H	11" (280mm)	28" (711mm)	3½" (80mm)	3½" (80mm)



MSE1128-318H

Gen: 17501-4361
FD1J Ranger Super 6 ('96-'02), FF2H Griffon ('91-'96), FG19L ('86-'91), FG1J Ranger 9 ('96-'02), FM1J Ranger 14 ('96-'02), GH1H Super Eagle ('91-'96), GH1J Ranger 10 ('96-'02),

STOCK CODE	BARREL DIAMETER	BARREL LENGTH	INLET (ID)	OUTLET (ID)
MSE1128-318H	11" (280mm)	28" (711mm)	3½" (80mm)	3½" (80mm)



Comes with 3 bolt flanged connector pipe.

MSE11831-2753F

Gen: 17501-2860
FT1J Ranger 5Z ('96-'02), GT1J Ranger 8Z ('96-'02), GT3H Osprey ('91-'96)

STOCK CODE	BARREL DIAMETER	BARREL LENGTH	INLET (ID)	OUTLET (ID)
MSE11831-2753F	11" (280mm) x 8" (203mm)	31" (787mm)	3 Bolt Flanged	3" (76mm)

Note: Also available without connector flange (Stock Code: MSE11831-2753)



ISUZU

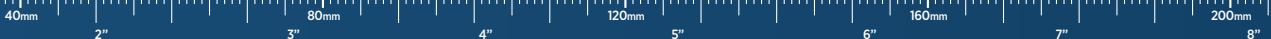
ISUZU QUICK MUFFLER REFERENCE BY MODEL

MODEL	STOCK CODE	MODEL	STOCK CODE
FSR12 ('84-'86)	MB1023-318	FVZ	MSB1039-335F
FSR12 ('86-'92)	MB1023-318	FVZ13 ('87-'92)	MB726-2F51
FSR32 ('92-'96)	MB1023-318	FVZ13 ('87-'92)	MSE1126-318
FSR32 ('92-'96)	MSE1126-318	FVZ13 ('92-'96)	MB726-2F51
FSR32 Turbo ('00-'03)	MSE1231-350F	FVZ23 ('00-'07)	MSE1231-350F
FSS12 ('86-'92)	MB1023-318	FVZ23 (UP TO '00)	MB1022-8095
FSS12 ('92-'96)	MB1023-318	FVZ5MK	MB1022-8095
FSS34 ('03-'07)	MSE1231-350F	GVR23 (2000)	MSE1231-350F
FTR11 ('84-'86)	MSE1126-318	JCR ('78-'84)	MSE1126-318
FTR11 ('86-'90)	MB1023-318	NKR58 ('94-'96)	MOO726-2FI
FTR11 ('86-'90)	MSE1126-318	NKR66	MB824-2FI
FTR12 ('84-'86)	MB1023-318	NKR66" (10/'94-'97)	MOO819-250F
FTR12 ('86-'92)	MB1023-318	NPR200	MB726-2FI
FTR12 ('86-'92)	MSE1126-318	NPR300	MB720-2FI
FTR32 ('92-'96)	MSE1126-318	NPR300 ('66)	MOO727-5363
FTS12 ('86-'96)	MB1023-318	NPR58 ('94-'95)	MOO726-2FI
FVD23 ('00-'07)	MSE1231-350F	NPR59 ('85-'94)	MB824-2F60
FVL23 ('00-'05)	MSE1231-350F	NPR66 ('91-'94)	MB824-2FI
FVM ('88 onwards)	MSB1039-335F	NPR66 ('94-'96)	MOO819-250F
FVM13 ('88-2/'92)	MB726-2F51	NPR66 ('96-'98)	MOO819-250F
FVM13 (3/'92-'96)	MSE1126-318	NPR70 ('03)	MB830-2F4F
FVM23 ('00-'05)	MSE1231-350F	NPR71 ('98-'02)	MOO819-250F
FVR11 ('84-'86)	MSE1126-318	NPS59 ('92-'94)	MB824-2F60
FVR12 ('84-'86)	MB1023-318	NPS66 (6/'93-'98)	MOO819-250F
FVR13 ('87-2/'92)	MB726-2F51	NPS70 (11/'02-'05)	MOO819-250F
FVR13 ('87-2/'92)	MSE1126-318	NPS71 ('98-'02)	MOO819-250F
FVR13 (3/'92-'96)	MB726-2F51	UNIVERSAL	MB820-238F
FVR13 (3/'92-'96)	MSE1126-318	UNIVERSAL	MB824-238
FVR23 ('03-'07)	MSE1231-350F	UNIVERSAL	MB824-250
FVR32 ('96-'02)	MSE1231-350F	6HE1 MOTOR	MB824-2383
FVX13 ('92-'96)	MSE1126-318	8Fv02	MB1022-8095

FLOWTECH

DIRECT FIT

ISUZU - DIRECT FIT





MB720-2FI

NPR300

STOCK CODE	BARREL DIAMETER	BARREL LENGTH	INLET (ID)	OUTLET (ID)
MB720-2FI	7" (178mm)	20" (508mm)	2 Bolt Flanged	2 Bolt Flanged



MB726-2F51

FVM13 ('88-2/'92), FVR13 ('87-2/'92), FVR13 (3/'92-'96), FVZ13 ('87-'92), FVZ13 ('92-'96)

STOCK CODE	BARREL DIAMETER	BARREL LENGTH	INLET (ID)	OUTLET (ID)
MB726-2F51	7" (178mm)	26" (660mm)	2 Bolt Flanged	2" (51mm)



MB726-2FI

Gen: 89704-9721

NPR200

STOCK CODE	BARREL DIAMETER	BARREL LENGTH	INLET (ID)	OUTLET (ID)
MB726-2FI	7" (178mm)	26" (660mm)	2 Bolt Flanged	2 Bolt Flanged



MB824-2FI

NPR66 ('91-'94), NKR66

STOCK CODE	BARREL DIAMETER	BARREL LENGTH	INLET (ID)	OUTLET (ID)
MB824-2FI	8" (203mm)	24" (610mm)	2 Bolt Flanged	2 Bolt Flanged



MB824-2F60

NPR59 ('85-'94), NPS59 ('92-'94)

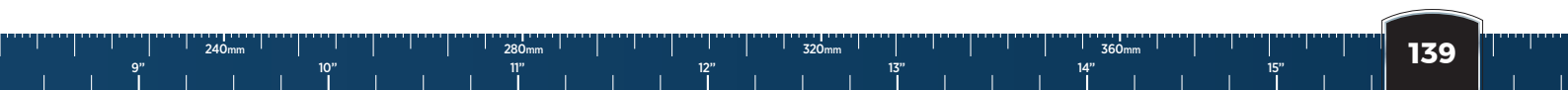
STOCK CODE	BARREL DIAMETER	BARREL LENGTH	INLET (ID)	OUTLET (ID)
MB824-2F60	8" (203mm)	24" (610mm)	2 Bolt Flanged	2 3/8" (60mm)



MB824-238

UNIVERSAL

STOCK CODE	BARREL DIAMETER	BARREL LENGTH	INLET (ID)	OUTLET (ID)
MB824-238	8" (203mm)	24" (610mm)	2 3/8" (60mm)	2 3/8" (60mm)





MB824-2383

Gen: 122140-7152

6HE1 MOTOR

STOCK CODE	BARREL DIAMETER	BARREL LENGTH	INLET (ID)	OUTLET (ID)
MB824-2383	8" (203mm)	24" (610mm)	2 3/8" (60mm)	3" (76mm)



MB830-2F4F

NPR70 ('03)

STOCK CODE	BARREL DIAMETER	BARREL LENGTH	INLET (ID)	OUTLET (ID)
MB830-2F4F	8" (203mm)	30" (762mm)	4 Bolt Flanged	2 Bolt Flanged



MB1022-8095

FVZ23 (UP TO '00), FVZ5MK, 8Fv02

STOCK CODE	BARREL DIAMETER	BARREL LENGTH	INLET (ID)	OUTLET (ID)
MB1022-8095	10" (254mm)	22" (560mm)	3 1/8" (80mm)	95mm



MB1023-318

FSR12 ('84-'86), FSR12 ('86-'92), FSR32 ('92-'96), FSS12 ('86-'92), FSS12 ('92-'96), FTR11 ('86-'90), FTR12 ('84-'86), FTR12 ('86-'92), FTS12 ('86-'96), FVR12 ('84-'86),

STOCK CODE	BARREL DIAMETER	BARREL LENGTH	INLET (ID)	OUTLET (ID)
MB1023-318	10" (254mm)	23" (584mm)	3 1/8" (80mm)	3 1/8" (80mm)



MSB1039-335F

Gen: 122140-5313

FVZ, FVM ('88 onwards)

STOCK CODE	BARREL DIAMETER	BARREL LENGTH	INLET (ID)	OUTLET (ID)
MSB1039-335F	10" (254mm)	39" (990mm)	4 Bolt Flanged	3 1/2" (90mm)



MOO726-2FI

NKR58 ('94-'96), NPR58 ('94-'95)

STOCK CODE	BARREL DIAMETER	BARREL LENGTH	INLET (ID)	OUTLET (ID)
MOO726-2FI	7" (178mm)	26" (660mm)	2 Bolt Flanged	2 Bolt Flanged



MOO727-5363

NPR300 ('66)

STOCK CODE	BARREL DIAMETER	BARREL LENGTH	INLET (ID)	OUTLET (ID)
MOO727-5363	7" (178mm)	27" (686mm)	53mm	63mm



MOO819-250F

Gen: 897206-5251

NKR66" (10/'94-'97), NPR66 ('94-'96), NPR66 ('96-'98), NPR71 ('98-'02), NPS66 (6/'93-'98), NPS70 (11/'02-'05), NPS71 ('98-'02)

STOCK CODE	BARREL DIAMETER	BARREL LENGTH	INLET (ID)	OUTLET (ID)
MOO819-250F	8" (203mm)	19" (483mm)	2 Bolt Flanged	2 Bolt Flanged



MOO824-250F

STOCK CODE	BARREL DIAMETER	BARREL LENGTH	INLET (ID)	OUTLET (ID)
MOO824-250F	8" (203mm)	24" (610mm)	2 Bolt Flanged	2 Bolt Flanged



MSE1126-318

Gen: 22140-7152

FSR32 ('92-'96), FTR11 ('84-'86), FTR11 ('86-'90), FTR12 ('86-'92), FTR32 ('92-'96), FVM13 (3/'92-'96), FVR11 ('84-'86), FVR13 ('87-2/'92), FVR13 (3/'92-'96), FVZ13 ('87-'92), FVX13 ('92-'96), JCR ('78-'84)

STOCK CODE	BARREL DIAMETER	BARREL LENGTH	INLET (ID)	OUTLET (ID)
MSE1126-318	11" (280mm)	26" (660mm)	3½" (80mm)	3½" (80mm)



MSE1231-350F

FSR32 Turbo ('00-'03), FSS34 ('03-'07), FVD23 ('00-'07), FVL23 ('00-'05), FVM23 ('00-'05), FVR32 ('96-'02), FVR23 ('03-'07), FVZ23 ('00-'07), GVR23 (2000)

STOCK CODE	BARREL DIAMETER	BARREL LENGTH	INLET (ID)	OUTLET (ID)
MSE1231-350F	12" (305mm)	31" (787mm)	4 Bolt Flanged	4 Bolt Flanged



PAGES 197-205

MID-RANGE VERSIONS

KENWORTH

FLOWTECH

DIRECT FIT

KENWORTH - DIRECT FIT



RUBBER MOUNTS

STOCK CODE	DIAMETER - A	DIAMETER - B	LENGTH	HOLE BORE
KW RUBBER MOUNT-1	51mm	32mm	32mm	13mm



BEADED COUPLERS

STOCK CODE	TUBE OD	MATERIAL	CLAMP TO SUIT
BC102VSS	4" (102mm)	STAINLESS STEEL	89520K
BC127VSS	5" (127mm)	STAINLESS STEEL	VB50V



BEADED FLEX UNIT

STOCK CODE	LENGTH	INLET/OUTLET
SSFBKEN102-335-V2	335mm	4" (102mm)
SSFBKEN127-335-V2	335mm	5" (127mm)
SSFBKEN127-440-V2	440mm	5" (127mm)



7" MUFFLER - GUARD BRACKET

STOCK CODE	SUITS BARREL OD
SPGB700KW	7" (178mm)



Y JUNCTIONS

STOCK CODE	SIZE A	SIZE B
JY500KW-SAR	5" (127mm)	5" (127mm)

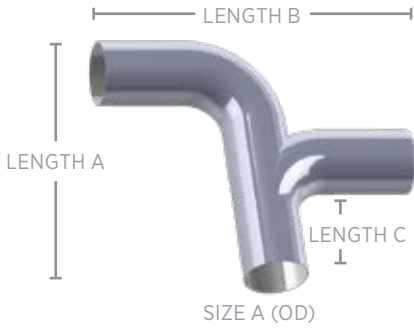
SIZE A (OD)



K104

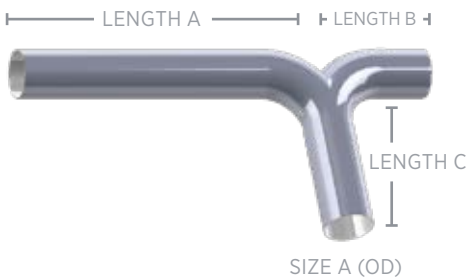
STOCK CODE	SIZE A	SIZE B
JY500A-K104	5" (127mm)	5" (127mm)

SIZE A (OD)



KENWORTH T401

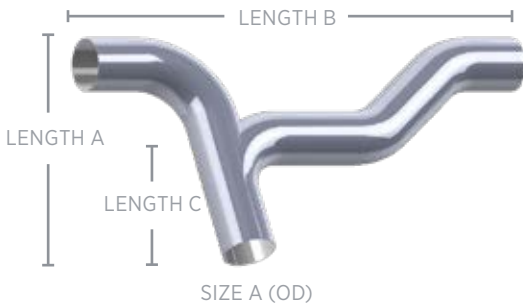
STOCK CODE	SIZE A (OD)	LENGTH A	LENGTH B	LENGTH C
JY500A-T401	5" (127mm)	523mm	600mm	323mm



KENWORTH T908



STOCK CODE	SIZE A (ID)	SIZE B (OD)	LENGTH A	LENGTH B
JY500A-T908	5" (127mm)	296mm	820mm	290mm



KENWORTH T908 - WITH AIR BAGS



STOCK CODE	SIZE A (OD)	LENGTH A	LENGTH B	LENGTH C
JY500A-T908-AIR	5" (127mm)	572mm	1160mm	350mm

K200 UPGRADES



HEAT SHIELD - 3/4 COVER

K200

STOCK CODE	SUITS BARREL OD	GUARD LENGTH
GFK200	14" (355mm)	48" (1220mm)



K200 DUMMY SIDE

K200 Dummy Muffler - with side inlet

STOCK CODE	BARREL DIAMETER	BARREL LENGTH	INLET	OUTLET (ID)
MSO1448-500-KW	14" (355mm)	48" (1220mm)	QRC500SS-LK	5" (127mm)



K200 Dummy Muffler - without inlet

STOCK CODE	BARREL DIAMETER	BARREL LENGTH	INLET	OUTLET (ID)
MSO1448-500NT	14" (355mm)	48" (1220mm)	None	5" (127mm)

Note:

For a range of retro fit Kenworth sports mufflers, refer to Performance section. See page 188 for a noise guide and other information. These mufflers typically have a 44" long barrel.

MERCEDES-BENZ - BUS

FLOWTECH

DIRECT FIT

MERCEDES-BENZ - DIRECT FIT



O303 (Non Turbo)

Gen: 301 490 0501

STOCK CODE	BARREL DIAMETER	BARREL LENGTH	INLET (ID)	OUTLET (OD)
MTW181029-275	10" (254mm) x 18" (457mm) Oval	29" (736mm)	2¾" (70mm)	2¾" (70mm)



O303 (Turbo)

Gen: 301 490 0501

STOCK CODE	BARREL DIAMETER	BARREL LENGTH	INLET (ID)	OUTLET (OD)
MTW181029-3350	10" (254mm) x 18" (457mm) Oval	29" (736mm)	3" (76mm)	3½" (89mm)



Early LINC bus, O305, O307, O305G

Gen: 3074901701 / 3074906421 / 3074908421

STOCK CODE	BARREL DIAMETER	BARREL LENGTH	INLET (ID)	OUTLET (OD)
MSOI1125-300BR	11" (280mm)	25" (635mm)	3" (76mm)	3" (76mm)



O400 Coach

Gen:

STOCK CODE	BARREL DIAMETER	BARREL LENGTH	INLET (ID)	OUTLET (OD)
MSO1228-450	12" (305mm)	28" (711mm)	4½" (114mm)	4½" (114mm)



O404 Coach

Gen: 618 490 0301

STOCK CODE	BARREL DIAMETER	BARREL LENGTH	INLET (ID)	OUTLET (OD)
MTW122037-3540	12" (305mm) x 20" (508mm) Oval	37" (940mm)	3½" (89mm)	4" (102mm)



O405 Volgren - side exit (Non-Turbo)

Gen: 357 490 0601 / 357 490 2101

STOCK CODE	BARREL DIAMETER	BARREL LENGTH	INLET (ID)	OUTLET (OD)
MSO11227-27580	12" (305mm)	27" (686mm)	2¾" (70mm)	3½" (80mm)



O405 Volgren - rear exit (Non-Turbo)

Gen:

STOCK CODE	BARREL DIAMETER	BARREL LENGTH	INLET (ID)	OUTLET (OD)
MSO1227-27540	12" (305mm)	27" (686mm)	2¾" (70mm)	4" (102mm)



O405 Volgren - rear exit (Turbo)

Gen: 357 409 1901

STOCK CODE	BARREL DIAMETER	BARREL LENGTH	INLET (ID)	OUTLET (OD)
MSO1227-400T	12" (305mm)	27" (686mm)	4" (102mm)	4" (102mm)



O500 LE Evobus - without stacks

Gen: A 629 491 0700

STOCK CODE	BARREL DIAMETER	BARREL LENGTH	INLET (ID)	OUTLET (OD)
MTS142139-40475BR	14" (356mm) x 21" (533mm) Oval	39" (990mm)	4" (102mm)	4¾" (120mm)



O500 LE Evobus - with stacks

Gen: A 629 491 0700

STOCK CODE	BARREL DIAMETER	BARREL LENGTH	INLET (ID)	OUTLET (OD)
MTS142139-40475BRS	14" (356mm) x 21" (533mm) Oval	39" (990mm)	4" (102mm)	4¾" (120mm)



OH1421 / OH1621

Gen: 382 490 7401

STOCK CODE	BARREL DIAMETER	BARREL LENGTH	INLET (ID)	OUTLET (OD)
MSO1161223-400	16" (406mm) x 12" (305mm) Oval	23" (584mm)	4" (102mm)	4" (102mm)

RELATED COMPONENTS



Flex bellow sections

STOCK CODE	LENGTH	BALLED END (OD)	LIPPED END (ID)
MERCB76	295mm	90mm	85-92mm
MERCB100	295mm	120mm	110-123mm



Ball flange only

STOCK CODE	BALLED END (OD)
MERCBALL76	90mm
MERCBALL100	120mm



Lip flange only

STOCK CODE	LIPPED END (ID)
MERCLF76	85-92mm
MERCLF89	100-108mm
MERCLF100	110-123mm



V Band Clamp

STOCK CODE	SUITS LIP FLANGE (OD)
MERCVB76	95mm
MERCVB89	110mm
MERCVB100	128mm

MERCEDES-BENZ - TRUCK



MBX-E3-ACT01

Gen: 9424901301, 9424902301

ACTROS

STOCK CODE	BARREL DIAMETER	BARREL LENGTH	INLET (ID)	OUTLET (ID)
MBX-E3-ACT01	24" x 16" (610 x 406mm)	23" (584mm)	5" (127mm)	5" (127mm)



MSB940-400

UNIVERSAL

STOCK CODE	BARREL DIAMETER	BARREL LENGTH	INLET (ID)	OUTLET (ID)
MSB940-400	9" (230mm)	40" (1016mm)	4" (102mm)	4" (102mm)



MSB940-405

2235, 2244, 2635

STOCK CODE	BARREL DIAMETER	BARREL LENGTH	INLET (ID)	OUTLET (ID)
MSB940-405	9" (230mm)	40" (1016mm)	4" (102mm)	5" (127mm)



Made to order

MSETW1140-335

2222K

STOCK CODE	BARREL DIAMETER	BARREL LENGTH	INLET (ID)	OUTLET (ID)
MSETW1140-335	11" (280mm)	40" (1016mm)	Dual 3" (76mm)	3½" (89mm)



Made to order

MSETW1245-335

UNIVERSAL

STOCK CODE	BARREL DIAMETER	BARREL LENGTH	INLET (ID)	OUTLET (ID)
MSETW1245-335	12" (305mm)	45" (1143mm)	Dual 3" (76mm)	3½" (89mm)

FLOWTECH

DIRECT FIT

MERCEDES-BENZ - DIRECT FIT

MITSUBISHI

Rosa Bus Gen: 13542



STOCK CODE	BARREL DIAMETER	BARREL LENGTH	INLET (ID)	OUTLET (ID)
MOO824-250FR	8" (203mm)	24" (610mm)	2½" (63mm) 3 Bolt	2½" (63mm) 3 Bolt

MITSUBISHI QUICK MUFFLER REFERENCE BY MODEL

MODEL	STOCK CODE	MODEL	STOCK CODE
CANTER (non turbo)	MOO717-200F	FK417 ('91-'95)	MB922-318
FE211 ('79-'85)	MOO717-225F (Canter)	FK457 ('89-4/'91)	MB922-318
FE214 ('83-'85)	MOO717-225F (Canter)	FK457 ('91-'95)	MB922-318
FE334 ('91-'95)	MOO717-225F (Canter)	FK617 ('95-10/'97)	MB922-318
FE434 ('86-'91)	MOO717-225F (Canter)	FK617 FIGHTER (10/'97-'02)	MB922-318
FE439 ('91-'95)	MOO717-225F (Canter)	FK618 ('95-'97)	MB923-8085
FE444 ('86-'95)	MOO717-225F (Canter)	FK618 FIGHTER (10/'97-'02)	MB923-8085
FE449 ('90-'95)	MOO717-225F (Canter)	FM10 Turbo	MB1024-384F
FE537" (10/'97-09/'02)	MOO821-250F (Canter)	FM515 ('85-'89)	MB922-318
FE537 (7/'96-11/'97)	MOO821-250F (Canter)	FM517 ('91-'95)	MB922-318
FE539 (04/'95-06/'96)	MOO821-250F (Canter)	FM555 ('88-'90)	MB922-318
FE637" (10/'97-09/'02)	MOO821-250F (Canter)	FM557 ('89-'91)	MB922-318
FE637 (7/'96-10/'97)	MOO821-250F (Canter)	FM618 ('95-'98)	MB923-8085
FE639 (10/'02-12/'04)	MOO821-250F (Canter)	FM618 FIGHTER ('98-'02)	MB922-318
FE639 6/'95-6/'96)	MOO821-250F (Canter)	FM618 FIGHTER ('98-'02)	MB923-8085
FE647" (10/'97-10/'02)	MOO821-250F (Canter)	FM657 ('95-'98)	MB922-318
FE647 (7/'96-11/'97)	MOO821-250F (Canter)	FM657 FIGHTER ('98-'02)	MB922-318
FE649 (10/'02-8/'05)	MOO821-250F (Canter)	FM658 ('95-'98)	MB923-8085
FE649 (4/'95-6/'96)	MOO821-250F (Canter)	FM658 FIGHTER ('98-'02)	MB923-8085
FE657 (9/'96-9/'97)	MOO821-250F (Canter)	FM677 FIGHTER ('98-'02)	MB922-318
FE657 7.5T (10/'97-9/'02)	MOO821-250F (Canter)	FM677 FIGHTER ('98-'02)	MB923-8085
FE659 (7/'95-6/'96)	MOO821-250F (Canter)	FV418 ('87-'96)	MSB939-485
FG434 ('89-'95)	MOO717-225F (Canter)	FV458 (6/'92 onwards)	MSB939-485
FG637 (7/'96-10/'97)	MOO821-250F (Canter)	GM60	MB1024-384F
FG637 5.5T (10/'97-10/'02)	MOO821-250F (Canter)	GM70	MB1024-384F
FG639 (8/'95-6/'96)	MOO821-250F (Canter)	GM70	MB1024-384F
FIGHTER 345	MB1024-384F	ROSA BUS ('99 onwards)	MOO824-250FR
FK417 ('89-4/'91)	MB922-318	UNIVERSAL	MB824-275



MB824-275 UNIVERSAL MC404093

STOCK CODE	BARREL DIAMETER	BARREL LENGTH	INLET (ID)	OUTLET (ID)
MB824-275	8" (203mm)	24" (610mm)	2¾" (70mm)	2¾" (70mm)



MB922-318

Gen: MC421885

FK417 ('89-4/'91), FK417 ('91-'95), FK457 ('89-4/'91), FK457 ('91-'95), FK617 ('95-10/'97), FK617 FIGHTER (10/'97-'02), FM515 ('85-'89), FM517 ('91-'95), FM555 ('88-'90), FM557 ('89-'91), FM618 FIGHTER ('98-'02), FM657 ('95-'98), FM657 FIGHTER ('98-'02), FM677 FIGHTER ('98-'02)

STOCK CODE	BARREL DIAMETER	BARREL LENGTH	INLET (ID)	OUTLET (ID)
MB922-318	9" (230mm)	22" (560mm)	3½" (80mm)	3½" (80mm)



MB923-8085

FK618 ('95-'97), FK618 FIGHTER (10/'97-'02), FM618 ('95-'98), FM618 FIGHTER ('98-'02), FM658 ('95-'98), FM658 FIGHTER ('98-'02), FM677 FIGHTER ('98-'02)

STOCK CODE	BARREL DIAMETER	BARREL LENGTH	INLET (ID)	OUTLET (ID)
MB923-8085	9" (230mm)	23" (584mm)	3½" (80mm)	85mm



Made to order

MSB939-485

Gen: MC638546

FV418 ('87-'96), FV458 (6/'92 onwards)

STOCK CODE	BARREL DIAMETER	BARREL LENGTH	INLET (ID)	OUTLET (ID)
MSB939-485	9" (230mm)	39" (990mm)	4" (102mm)	85mm



MB1024-384F

FIGHTER 345, FM10 Turbo, GM60, GM70, GM70

STOCK CODE	BARREL DIAMETER	BARREL LENGTH	INLET (ID)	OUTLET (ID)
MB1024-384F	10" (254mm)	24" (610mm)	3" / 4 Bolt	84mm



MOO717-200F

Gen: MC116347

CANTER (non turbo)

STOCK CODE	BARREL DIAMETER	BARREL LENGTH	INLET (ID)	OUTLET (ID)
MOO717-200F	7" (178mm)	17" (432mm)	2" (51mm) 3 Bolt	2" (51mm) 3 Bolt



MOO717-225F

FE211 ('79-'85), FE214 ('83-'85), FE334 ('91-'95), FE434 ('86-'91), FE439 ('91-'95), FE444 ('86-'95), FE449 ('90-'95), FG434 ('89-'95)

STOCK CODE	BARREL DIAMETER	BARREL LENGTH	INLET (ID)	OUTLET (ID)
MOO717-225F	7" (178mm)	17" (432mm)	2¼" (57mm) 3 Bolt	2¼" (57mm) 3 Bolt



MOO821-250F

Gen: MC291590

FE537" (10/'97-09/'02), FE537 (7/'96-11/'97), FE539 (04/'95-06/'96), FE637" (10/'97-09/'02), FE637 (7/'96-10/'97), FE639 (10/'02-12/'04), FE639 6/'95-6/'96), FE647" (10/'97-10/'02), E647 (7/'96-11/'97), FE649 (10/'02-8/'05), FE649 (4/'95-6/'96), FE657 (9/'96-9/'97), FE657 7.5T (10/'97-9/'02), FE659 (7/'95-6/'96), FG637 (7/'96-10/'97), FG637 5.5T (10/'97-10/'02), FG639 (8/'95-6/'96)

STOCK CODE	BARREL DIAMETER	BARREL LENGTH	INLET (ID)	OUTLET (ID)
MOO821-250F	8" (203mm)	21" (533mm)	2½" (63mm) 3 Bolt	2½" (63mm) 3 Bolt



MOO824-250FR

Gen: 13542

ROSA BUS ('99 onwards)

STOCK CODE	BARREL DIAMETER	BARREL LENGTH	INLET (ID)	OUTLET (ID)
MOO824-250FR	8" (203mm)	24" (610mm)	2½" (63mm) 3 Bolt	2½" (63mm) 3 Bolt

SCANIA



Bus, G92, P92, R92, T92

Gen: 357402

STOCK CODE	BODY DIAMETER	BODY LENGTH	INLET (ID)	OUTLET (ID)
M1236-438	12" (305mm)	36" (915mm)	4 $\frac{3}{8}$ " (110mm)	4 $\frac{3}{8}$ " (110mm)



L94, K94, K124, K114

Gen: 1800871 / 1500455 / 1378553 / 1420278

Square box muffler

STOCK CODE	BEADED INLET	BEADED OUTLET
45670	114mm	114mm



M1050-500

STOCK CODE	BARREL DIAMETER	BARREL LENGTH	INLET (ID)	OUTLET (ID)
M1050-500	10" (254mm)	50" (1270mm)	5" (127mm)	5" (127mm)

RELATED COMPONENTS



Series 94, 114, 124, 144, 164

Flex bellow with flanged ends

STOCK CODE	LENGTH
45761	190mm



V-Band Clamp

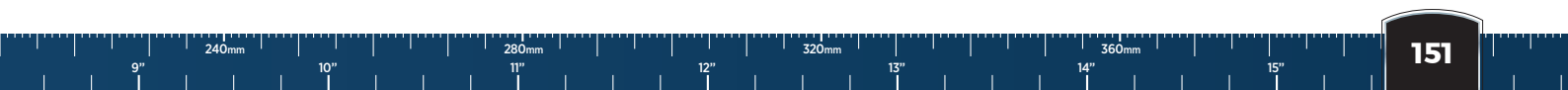
Gen: 1335618 / 1371089

STOCK CODE	SUITS MUFFLER
45563-VB	45670

FLOWTECH

DIRECT FIT

SCANIA - DIRECT FIT





UD TRUCKS



UD CMA86

STOCK CODE	BARREL DIAMETER	BARREL LENGTH	INLET (ID)	OUTLET (ID)
MB820-275F	8" (203mm)	20" (508mm)	2-3/4" / 4 Bolt	2 3/4" (70mm)

UD Universal

STOCK CODE	BARREL DIAMETER	BARREL LENGTH	INLET (ID)	OUTLET (ID)
MB820-300F	8" (203mm)	20" (508mm)	4 Bolt	3" (76mm)

UD CN180

STOCK CODE	BARREL DIAMETER	BARREL LENGTH	INLET (ID)	OUTLET (ID)
MSB926-300F	9" (230mm)	26" (660mm)	4 Bolt	3" (76mm)

UD Universal

Gen: 2010Z5579

STOCK CODE	BARREL DIAMETER	BARREL LENGTH	INLET (ID)	OUTLET (ID)
MB1027-300F	10" (254mm)	27" (685mm)	4 Bolt	3" (76mm)

FLOWTECH

DIRECT FIT

UD TRUCKS - DIRECT FIT

VOLVO - BUS



B12 (secondary resonator)

Gen: 1094742 / 1665849

STOCK CODE	BARREL DIAMETER	BARREL LENGTH	INLET (ID)	OUTLET (ID)
M1019-500TP	10" (254mm)	19" (483mm)	5" (127mm) Lipped	5" (127mm)



B12

Gen: 1676496 / 3979909 / 3979599

STOCK CODE	BARREL DIAMETER	BARREL LENGTH	INLET (ID)	OUTLET (ID)
MSO1827-500VOL	18" (457mm)	27" (686mm)	5" (127mm) Lipped	5" (127mm) Lipped



B9M, B10M

Gen: 3037196

STOCK CODE	BARREL DIAMETER	BARREL LENGTH	INLET (ID)	OUTLET (ID)
MSO11427-400BC	14" (356mm)	27" (686mm)	4" (102mm) Beaded Coupler	4" (102mm) Beaded Coupler



B7, B7R

Gen: 8149232 / 3162349

STOCK CODE	BARREL DIAMETER	BARREL LENGTH	INLET (ID)	OUTLET (ID)
MSE121330-400ELF	12" (305mm) x 13" (300mm) Oval	30" (762mm)	4" (102mm) Lipped	4" (102mm) Lipped

FLOWTECH

DIRECT FIT

VOLVO - DIRECT FIT

VOLVO - TRUCK

FLOWTECH

DIRECT FIT

VOLVO - DIRECT FIT



VOLVO 450

Gen: 5991989

FL10 (310Hp)

STOCK CODE	BARREL DIAMETER	BARREL LENGTH	INLET (ID)	OUTLET (ID)
VOLVO 450	10" (254mm)	44" (1120mm)	4½" (114mm) Lipped	4½" (114mm)

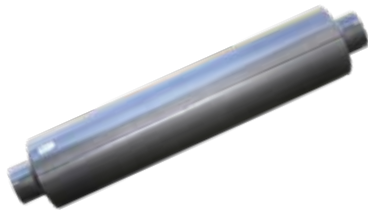


VOLVO 500

Gen: 1661420

FI2, FL10, FL12, FL7, NL10, NL12, TD101, TD71, TD73

STOCK CODE	BARREL DIAMETER	BARREL LENGTH	INLET (ID)	OUTLET (ID)
VOLVO 500	10" (254mm)	44" (1120mm)	4½" (114mm) Lipped	5" (127mm)



MSB1055-500

Gen: 8149612

FH12, FH16, FM10, FM7

STOCK CODE	BARREL DIAMETER	BARREL LENGTH	INLET (ID)	OUTLET (ID)
MSB1055-500	10" (254mm)	55" (1397mm)	5" (127mm)	5" (127mm)

MSB1055-500

UNIVERSAL

STOCK CODE	BARREL DIAMETER	BARREL LENGTH	INLET (ID)	OUTLET (ID)
M1055-500	10" (254mm)	55" (1397mm)	5" (127mm)	(127mm)

MSB1055-500

UNIVERSAL

STOCK CODE	BARREL DIAMETER	BARREL LENGTH	INLET (ID)	OUTLET (ID)
MSB1050-500	10" (254mm)	50" (1270mm)	5" (127mm)	(127mm)



Made to order

MSO1827-500VOL

Gen: 1676496 / 3979909 / 3979599

FH12, FH16, FH16 (Euro 5), FL12 (D12 A Engine), L2000 Series (L21, L25, L34, L35, L36)

STOCK CODE	BARREL DIAMETER	BARREL LENGTH	INLET (ID)	OUTLET (ID)
MSO1827-500VOL	18" (457mm)	27" (686mm)	5" (127mm) Lipped	5" (127mm) Lipped



Made to order

MSOI1427-400BC

Gen: 3037196

F90 Series (U07, U11, U13, U15, U16, U20)

STOCK CODE	BARREL DIAMETER	BARREL LENGTH	INLET (ID)	OUTLET (ID)
MSOI1427-400BC	14" (356mm)	27" (686mm)	4" (102mm) Beaded Coupler	4" (102mm) Beaded Coupler



Made to order

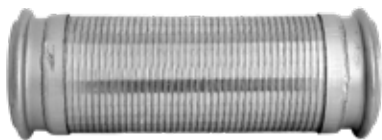
MSE121330-400ELF

Gen: 8149232 / 3162349

FL 608 - 611, FL 612 - 615, FL 616 - 626, FL C

STOCK CODE	BARREL DIAMETER	BARREL LENGTH	INLET (ID)	OUTLET (ID)
MSE121330-400ELF	12" (305mm) x 13" (330mm)	30" (762mm)	4" (102mm) Lipped	4" (102mm) Lipped

BEADED FLEX UNIT



Flex connector with beaded ends

STOCK CODE	LENGTH	INLET	OUTLET
VOLVOB350	320mm	3½" (90mm) Beaded	3½" (90mm) Beaded
VOLVOB450	390mm	4½" (114mm) Beaded	4½" (114mm) Beaded
VOLVOB500	335mm	5" (127mm) Beaded	5" (127mm) Beaded

V-BAND STYLE CLAMPS



VB50V

Gen: 1629499

STOCK CODE	CLAMP SIZE
VB50V	5" (127mm)

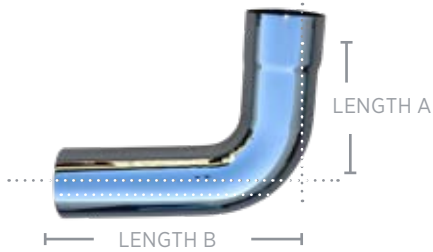


VB45V

Gen: 1624612

STOCK CODE	CLAMP SIZE
VB45V	4½" (114mm)

WESTERN STAR

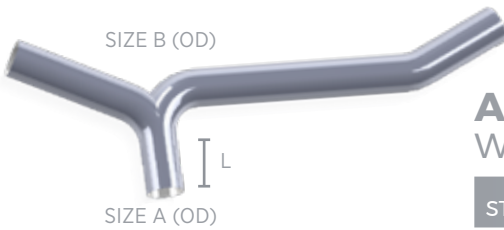


WESTERN STAR CHROME BEND

STOCK CODE	SIZE OD	LENGTH A	LENGTH B
CPB5085TR-13X15P	5" (127mm)	13" (330mm)	15" (380mm)
CPB5085-13X18P	5" (127mm)	13" (330mm)	18" (457mm)

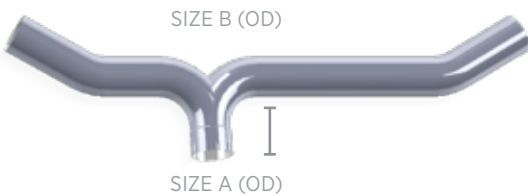
CPB 85

Bend Angle: 85°
Bend Radius: 1.5D



ALUMINISED STEEL WESTERN STAR - CONSTELLATION

STOCK CODE	SIZE A (OD)	SIZE B (OD)	LENGTH (L)
JY500-WSC	5" (127MM)	5" (127MM)	102mm
JY500-WSC1	5" (127MM)	5" (127MM)	250mm



WESTERN STAR - HERITAGE

STOCK CODE	SIZE A (OD)	SIZE B (OD)
JY500-WSH	5" (127MM)	5" (127MM)



7" MUFFLER - GUARD BRACKET

STOCK CODE	SUITS BARREL OD
SPGB700WSJ	7" (178mm)
SPGB700WS	7" (178mm)

EURO IV & EURO V

AFTERMARKET SILENCERS

Not all models are stocked.

If your model is not listed here please call for further detail.



BCI

STOCK CODE

MSO2020-400SCR

APPLICATION

BCI BUS with Cummins - SCR ADBLUE



DAF

STOCK CODE

1827551

APPLICATION

CF85 Euro 4 & 5 Silencer YR 2005> (1747252,1670928)



MACK

STOCK CODE

21426870

APPLICATION

Mack Triton



MAN

STOCK CODE

MSE1622-450B

APPLICATION

EURO 4: MAN A69 Bus (GEN: 81151010381)

FLOWTECH

DIRECT FIT

EURO IV & V SILENCERS

BCI / DAF / MACK / MAN

FLOWTECH

DIRECT FIT

EURO IV & V SILENCERS

VOLVO



VOLVO

STOCK CODE	APPLICATION
20579346	EURO 4: FM480/500 FH D13A Engine



20976277	EURO 4: FH16 - D16 Engine High Mount
----------	--------------------------------------



21395509	EURO 4: FH16 - D16 Engine Vertical Mount
----------	--



20579347	EURO 5: FM480/500 FM D13A Engine
----------	----------------------------------



VOLVO CONT'D

STOCK CODE

APPLICATION

20579349

EURO 5: FM480/500 FM D13A Engine



20920705

EURO 5: D13C,FM4,FH12,FH16 - 460HP TO 540HP



20920708

EURO 5: SCR FH13,FM 2005 ON <420HP



21571617

Euro 5: ADBLUE B7R Bus Silencer (also 20843772, 21571613)

FLOWTECH

DIRECT FIT

EURO IV & V SILENCERS

VOLVO